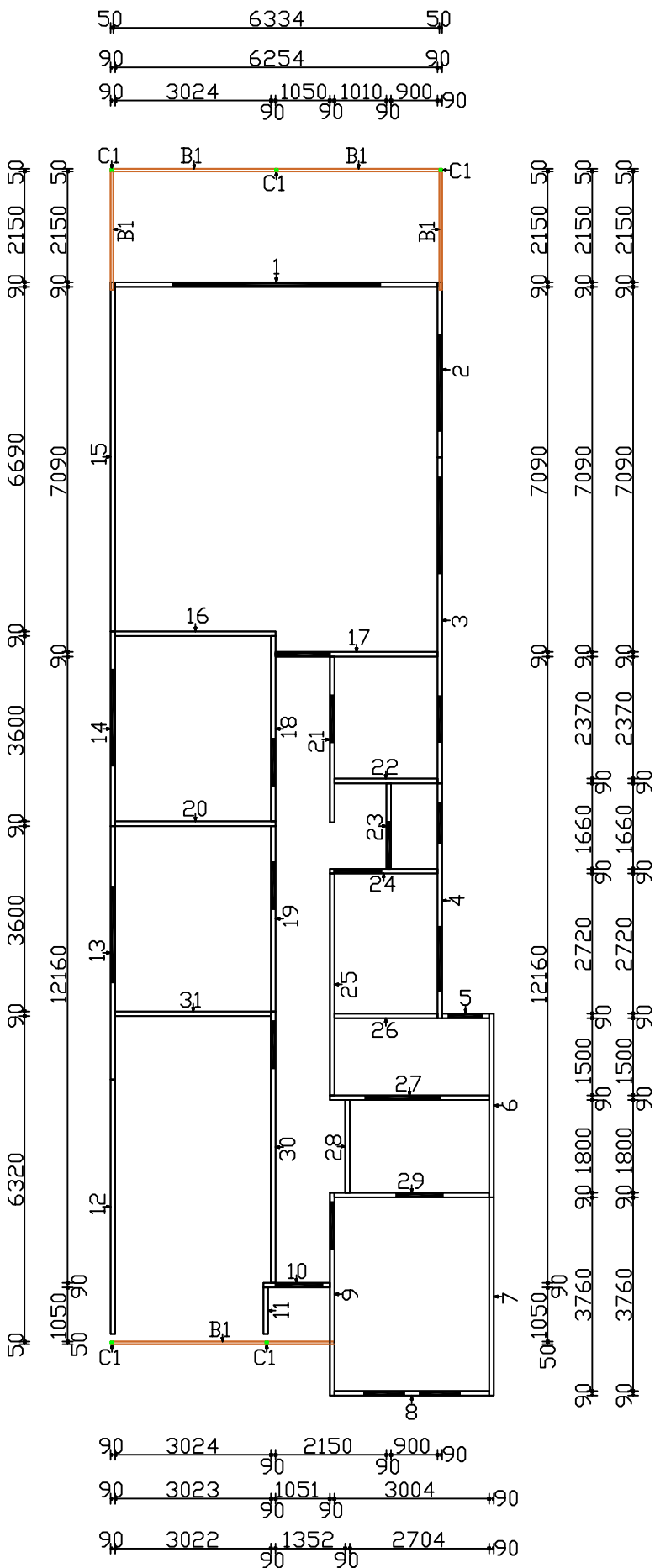
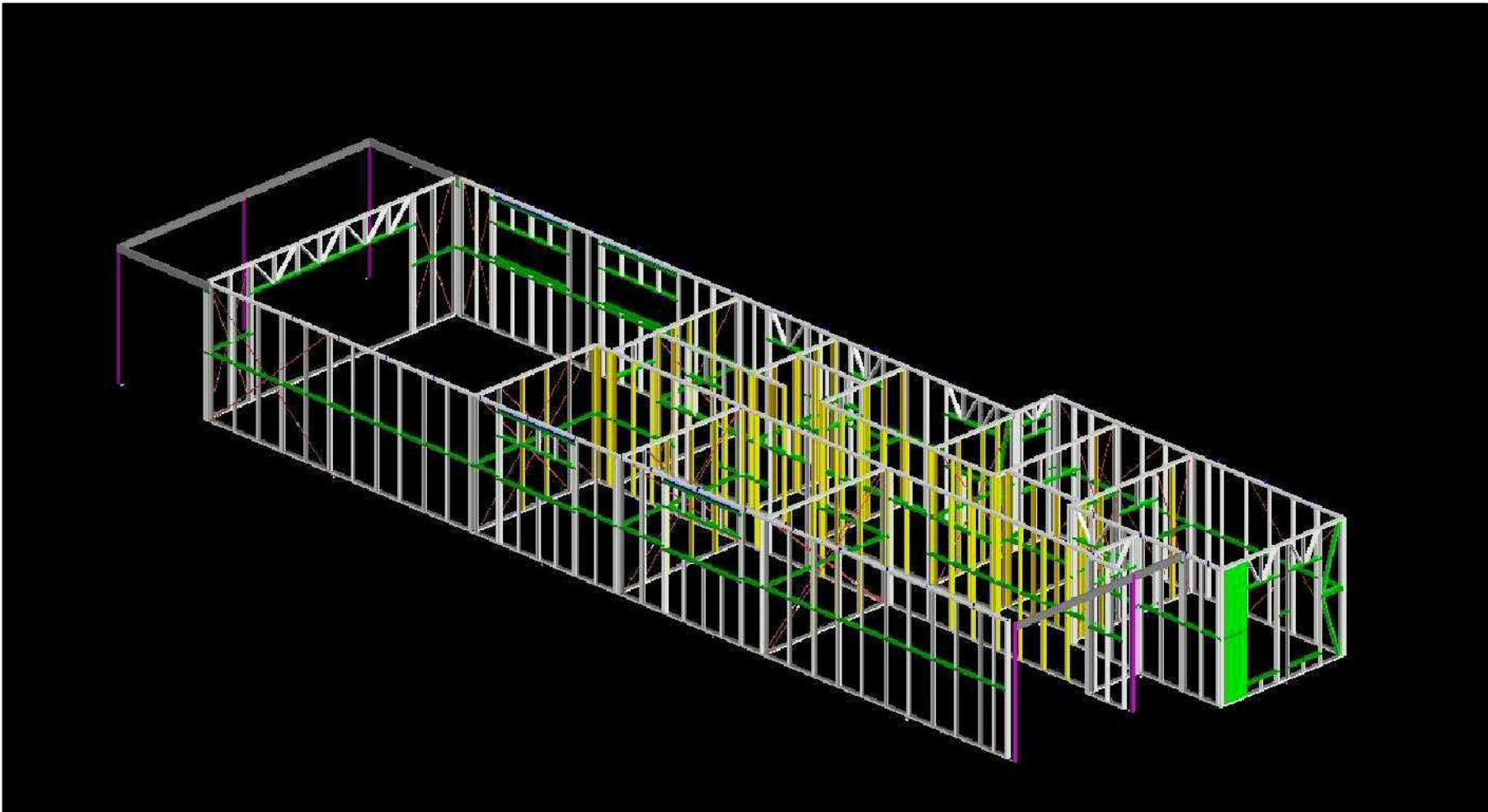



BEAM DETAILS

B1 - RHS-150x50x2.0
C1 - SHS 50x50x1.6



ADDITIONAL NOTES

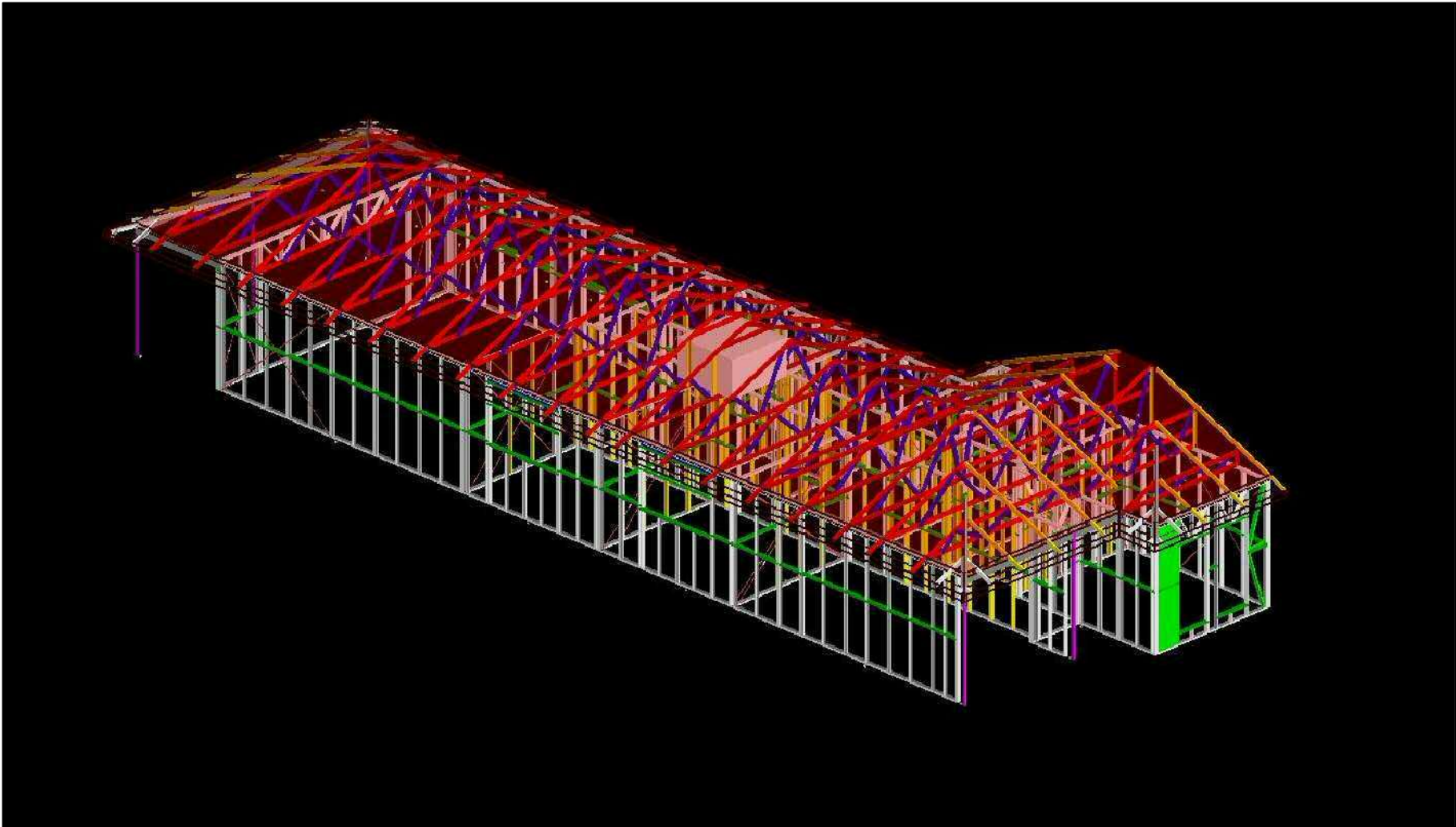
ARROWS SHOW THE DIRECTION
THE WALLS ARE VIEWED FROM
CHALK OUT SLAB USING ARCHITECTURAL
DRAWINGS NOT TSF LAYOUTS

NO.	DATE:	BY:	REVISION:	<div><p>TRUE STEEL FRAMES <i>Steel, the true way to build!</i></p><p>31 HEWITTON RD, EDINBURGH NORTH 5113 SITE ENQUIRIES - Ph: (08) 8252 0046</p></div>	WALL FRAME LAYOUT GROUND FLOOR PLAN		WINDSPEED:	N1	DETAILED BY:
1							WALL THICKNESS:	90mm	
2					DW1 14 BAKER AVE MORPHETTVILLE TSF-4261 - BERT FARINA CONSTRUCTIONS		L.B.W HEIGHT:	2745mm	CHECKED: rebecca
3							N.L.B.W HEIGHT:	2710mm	
4							EXTERNAL CLADDING:	BRICK	

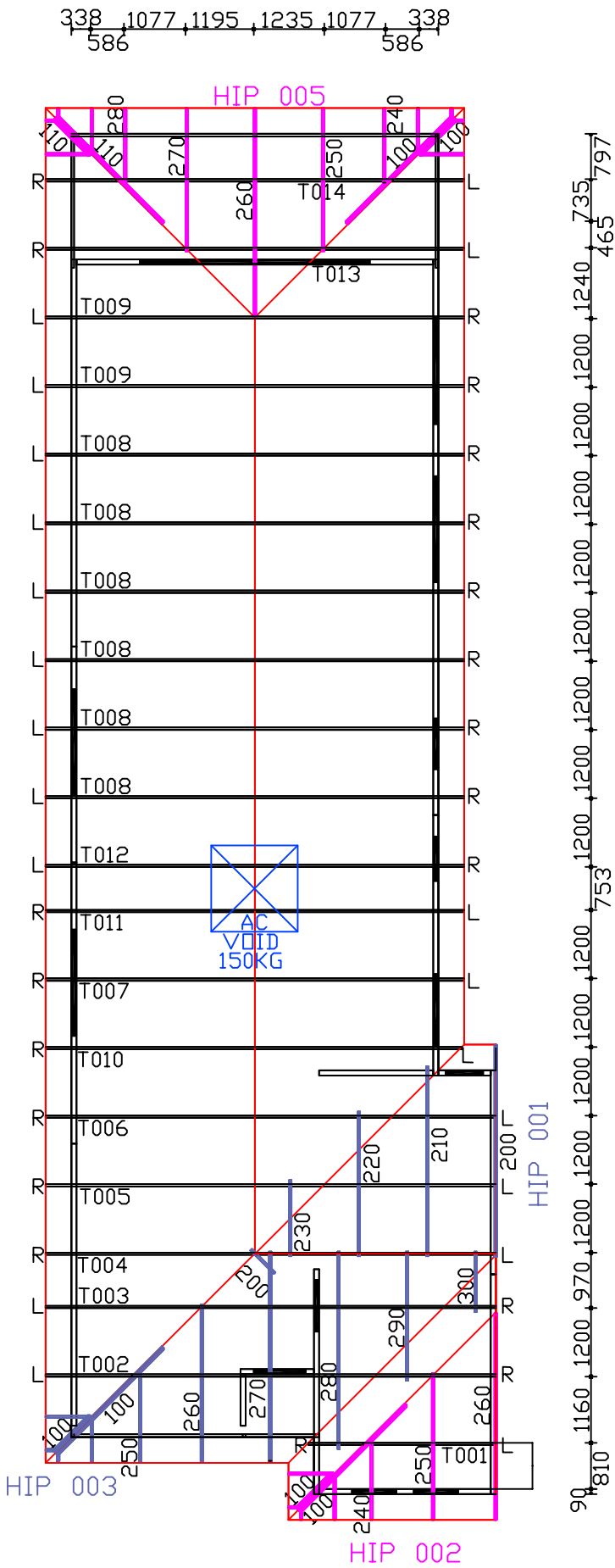
SHEET LEGEND

L - R DENOTES THE ORIENTATION OF THE TRUSS

AC VOID LOADED UP TO 150KGS
TO BE SHARED OVER TWO TRUSSES



NOTE:
All Web Rails/Internal Chords/Chord Other require lateral restraints (Top Span 40 or C7575ra) to be provided at 1.8m max spacing and braced to ceiling plane



NO.	DATE:	BY:	REVISION:
1			
2			
3			
4			



31 HEWITTSON RD, EDINBURGH NORTH 5113
SITE ENQUIRIES - Ph: (08) 8252 0046

TRUSS LAYOUT GROUND FLOOR PLAN		WINDSPEED:	N1	DETAILED BY:
DW1 14 BAKER AVE MORPHETTVILLE TSF-4261 - BERT FARINA CONSTRUCTIONS		ROOF TYPE:	SHEET	Jarrood
		ROOF PITCH:	22 Degrees	CHECKED:
		SECTION TYPE:	U9075	rebecca
		ROOF FEATURES:		

SHEET LEGEND

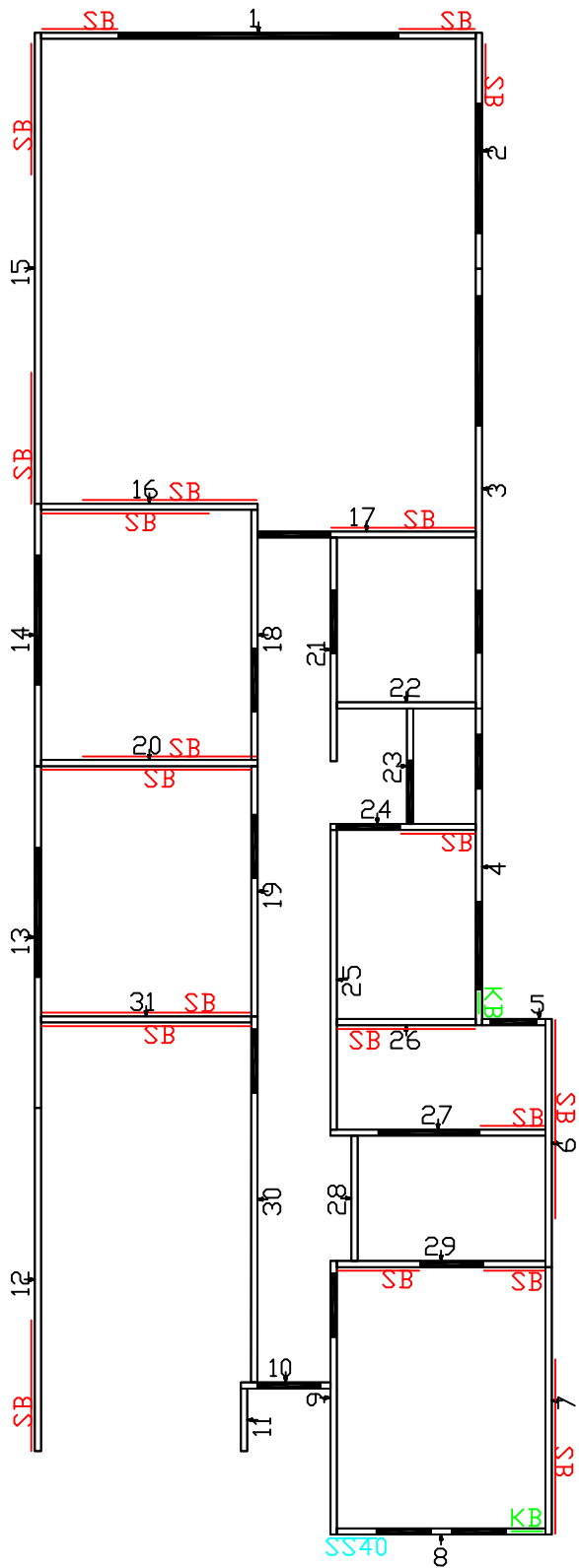
SB = 1.0x30x550 STRAP BRACE ON FRAME FACE


KB = 0.75 GAUGE K-BRACE WITHIN FRAME

SS40 = 0.42 PANEL BRACE FOR SHEET BRACING OR EQUIVALENT

ADDITIONAL NOTES

- ARROWS SHOW THE DIRECTION THE WALLS ARE VIEWED FROM
- STRAP BRACING IS TO BE INSTALLED ON THE SIDE OF A FRAME HIGHLIGHTED ON THE PLAN



NO.	DATE:	BY:	REVISION:	<div><p>31 HEWITTON RD, EDINBURGH NORTH 5113 SITE ENQUIRIES - Ph: (08) 8252 0046</p></div>	WALL BRACING LAYOUT GROUND FLOOR PLAN		WINDSPEED:	N1	DETAILED BY: Jarrod
1							WALL THICKNESS:	90mm	
2					DW1 14 BAKER AVE MORPHETTVILLE TSF-4261 - BERT FARINA CONSTRUCTIONS	EXTERNAL CLADDING:	L.B.W HEIGHT:	2745mm	CHECKED: rebecca
3							N.L.B.W HEIGHT:	2710mm	
4								BRICK	